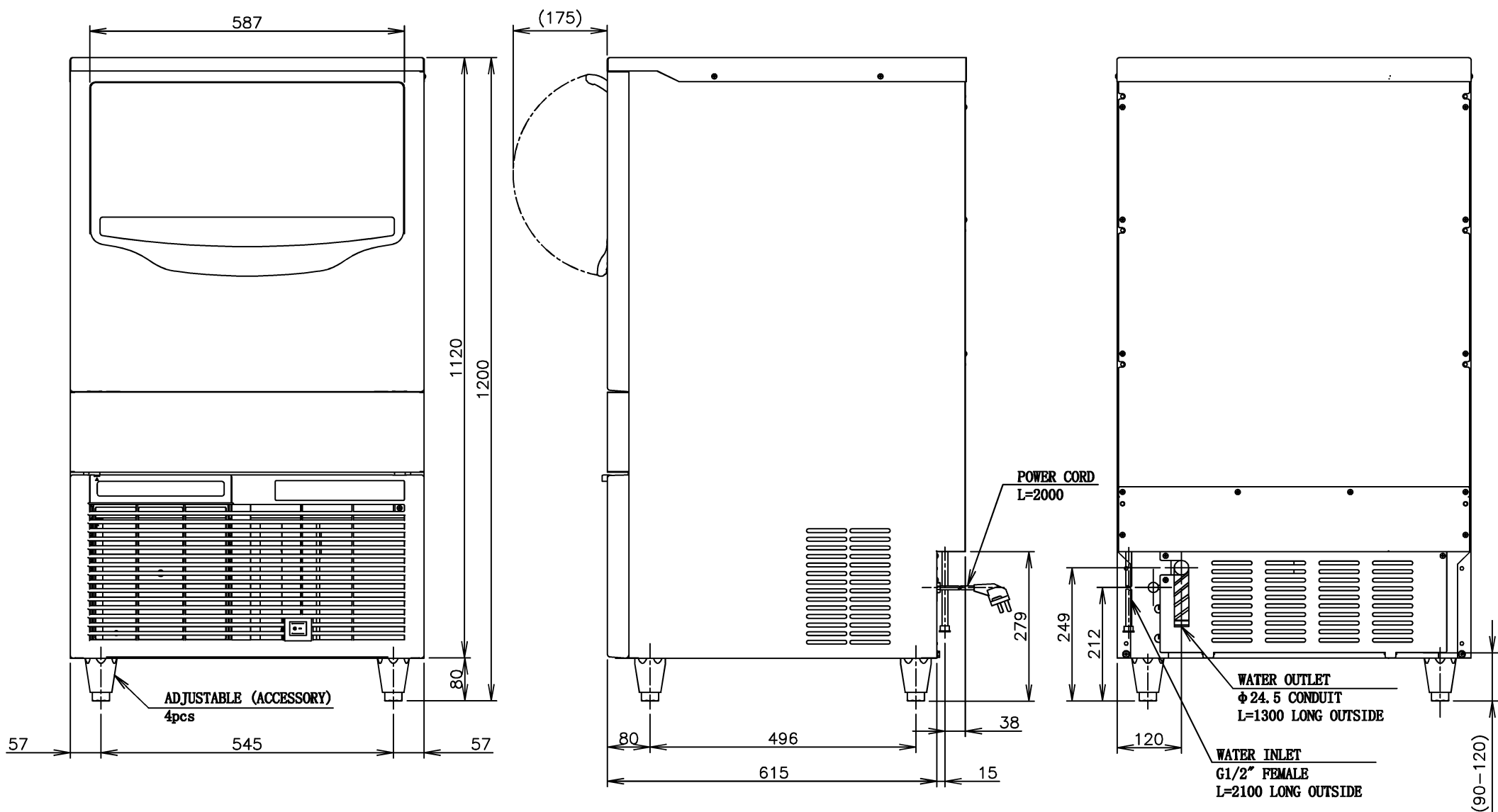


OPERATING CONDITIONS	Ambient Temp.: 5-38°C; Water Supply Temp.: 5-32°C
	Water Supply Pressure: 0.07-0.55MPa (0.7-5.5bar)
	Voltage Range: 198-254V

- \*We reserve the right to make changes in specifications and design without prior notice.
1. Install the ice maker properly in accordance with the instructions on location, water supply/drain connections and electrical connections stated in the instructions and installation manuals provided.
  2. The ice production depends on the ambient and water temperatures
  3. Product Code: M081-C001

ITEM	ICE MATE SELF-CONTAINED TYPE RHOMBIC ICE MAKER
MODEL	SRM-105A
POWER SUPPLY	1 Phase 220-230V 60Hz
RATED AMPERAGE	4.0A (Ambient Temp.32°C, Water Temp.21°C)
STARTING AMPERAGE	20.0A
ELECTRIC CONSUMPTION	530W (Ambient Temp.32°C, Water Temp.21°C)
POWER FACTOR	69%
POWER CAPACITY	Min 1.20kVA (5.45A)
ICE PRODUCTION PER 24h	Approx.108kg/24h (Ambient Temp.10°C, Water Temp.10°C) Approx.95kg/24h (Ambient Temp.21°C, Water Temp.15°C) Approx.78kg/24h (Ambient Temp.32°C, Water Temp.21°C)
WATER CONSUMPTION PER 24h	Approx.0.23m <sup>3</sup> /24h (Ambient Temp.10°C, Water Temp.10°C) Approx.0.21m <sup>3</sup> /24h (Ambient Temp.21°C, Water Temp.15°C) Approx.0.17m <sup>3</sup> /24h (Ambient Temp.32°C, Water Temp.21°C)
SHAPE OF ICE	Cube
FREEZE CYCLE TIME	Approx.18min (Ambient Temp.21°C, Water Temp.15°C)
ICE PRODUCTION PER CYCLE	Approx.1.28kg/126pcs (Ambient Temp.21°C, Water Temp.15°C)
MAX ICE STORAGE CAPACITY	43.6kg (natural ice storage: 41.78kg)
OUTSIDE DIMENSIONS	660mm (W) x 670mm (D) x 1200mm (H)
EXTERIOR	Front: Plastic, Top & sides: Stainless Steel, Rear: Galvanized Steel
INSULATION	Polyurethane Foam
FOAM BLOWING AGENT	Cyclopentane, without CFC, ODP: 0, GWP: 3
CONNECTIONS - ELECTRIC	Y-Type Connection
CONNECTIONS - WATER SUPPLY	Inlet G1/2" Internal Thread (connected at rear side)
CONNECTIONS - DRAIN	Outlet φ24.5 (connected at rear side)
ICE MAKING SYSTEM	Vertical Evap, Jet Spray System On one side
HARVESTING SYSTEM	Hot Gas Defrost and Gravity
COMPRESSOR	Hermetic
CONDENSER	Fin and Tube type, Air-cooled
HEAT REJECTION	1270W (1092kcal/h) (Ambient Temp.32°C, Water Temp.21°C)
EVAPORATOR	Vertical, Copper Tube and Sheet (Surface Plating)
REFRIGERANT CONTROL	Expansion valve
REFRIGERANT CHARGE	R404A/320g
ICE MAKING CONTROL	Ice Thickness Sensor, Water Level Sensor, Timer
HARVESTING CONTROL	Ice Guide, Timer
BIN CONTROL	Bin Control Switch
ELECTRICAL PROTECTION	6.3A FUSE
COMPRESSOR PROTECTION	Auto-reset Overload Protector
ICE MAKER PROTECTION	Interlock by Controller Board
WEIGHT	Net: 61kg, Gross: 69kg
PACKAGE	Carton 785mm (W) x 860mm (D) x 1250mm (H)
ACCESSORIES	Instruction Manual, Scoop



# ICE MATE RHOMBIC ICE MAKER (SELF-CONTAINED TYPE) SRM-105A

APPROVED YAMAGUCHI	CHECKED TIAN	DESIGNED WYF	DRAWN WYF	SCALE 1/10	TRIGONOMETRY
*	*	△	*****	DATE 2019.04.03	DRAWING NO. D24808
APPROVED	DESIGNED	SYMBOL	DATE		SYMBOL △